

# Meeting

POLTRONCINA OPERATIVA / OPERATIVE CHAIR  
SGABELLO / STOOL



CODE: **MT300** - **MT200** - MT300SG - MT200SG - MT400- MT401 - MT500 - MT501



MT300



MT200

## DETTAGLI TECNICI

### STRUTTURA

Schienale con rete portante.  
Sedile in legno multistrato  
sp.11 mm.

### IMBOTTITURA

Schienale con rete portante.  
Sedile in poliuretano flessibile  
con densità 40 kg m<sup>3</sup>.

### BASAMENTO

5 razze in nylon rinforzato  
nero. Diametro base 640 mm.

### RUOTE / PIEDINO FISSO

Ruote Ø 60 con freno. Batti-  
strada duro.

### MECCANISMO

Meccanismo tilt, bloccabi-  
le posizione operativa. Leva  
comando h. sedile. Manopola  
regolazione intensità spinta  
schienale.

### BRACCIOLI

Bracciacoli fissi in PP nero.

## TECHNICAL DETAILS

### STRUCTURE

Backrest with supporting net.  
Seat in plywood 11 mm thick.

### PADDING

Backrest with supporting net.  
Seat in flexible polyurethane  
with density 40 kg m<sup>3</sup>.

### BASEMENT

5 spokes in black reinforced  
nylon. Base diameter 640 mm.

### WHEELS / FIXED FOOT

Wheels Ø 60 with brake. Hard  
tread.

### MECHANISM

Tilt mechanism, lockable ope-  
rating position. Control lever h.  
seat. Backrest push intensity  
adjustment knob.

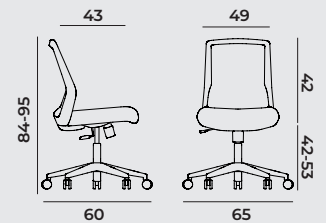
### ARMRESTS

Fixed armrests in black PP.

MT300

box m<sup>3</sup>

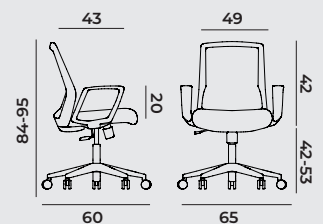
0,24



MT200

box m<sup>3</sup>

0,24



## Rivestimenti /Upholstery

In rete nera e tessuto  
nero.

Black mesh and black  
fabric.

Base



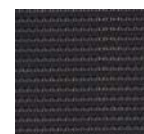
nylon black

frame



nylon black

mesh



fabric



Optional seat cover color:



M463



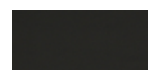
M629



M231



M332



Secret 1017  
Eco-leather

# Meeting

POLTRONCINA OPERATIVA / OPERATIVE CHAIR  
SGABELLO / STOOL



CODE: MT300 - MT200 - **MT300SG** - **MT200SG** - MT400- MT401 - MT500 - MT501



MT300SG



MT200SG

## DETTAGLI TECNICI

### STRUTTURA

Schienale con rete portante.  
Sedile in legno multistrato  
sp.11 mm.

### IMBOTTITURA

Schienale con rete portante.  
Sedile in poliuretano flessibile  
con densità 40 kg m<sup>3</sup>.

### BASAMENTO

5 razze in nylon rinforzato  
nero. Diametro base 640 mm.

### RUOTE / PIEDINO FISSO

Ruote Ø 60 con freno. Batti-  
strada duro.

### MECCANISMO

Piastra con Leva comando h.  
sedile.

### BRACCIOLI

Braccioli fissi in PP nero.

## TECHNICAL DETAILS

### STRUCTURE

Backrest with supporting net.  
Seat in plywood 11 mm thick.

### PADDING

Backrest with supporting net.  
Seat in flexible polyurethane  
with density 40 kg m<sup>3</sup>.

### BASEMENT

5 spokes in black reinforced  
nylon. Base diameter 640 mm.

### WHEELS / FIXED FOOT

Wheels Ø 60 with brake. Hard  
tread.

### MECHANISM

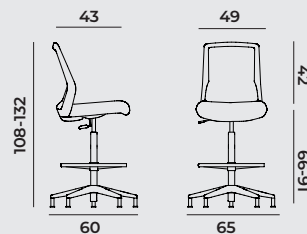
Plate with control lever h. Seat.

### ARMRESTS

Fixed armrests in black PP.

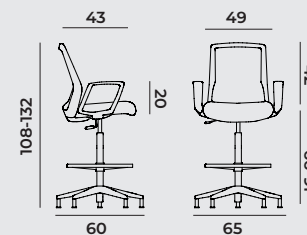
MT300SG

box m<sup>3</sup>  
0,24



MT200SG

box m<sup>3</sup>  
0,24



## Rivestimenti /Upholstery

In rete nera e tessuto  
nero.

Black mesh and black  
fabric.

### Base



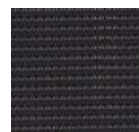
nylon black

### frame

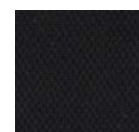


nylon black

### mesh



### fabric



## Optional seat cover color:



M463



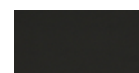
M629



M231



M332



Secret 1017  
Eco-leather

# Meeting

POLTRONCINA OPERATIVA / OPERATIVE CHAIR  
SGABELLO / STOOL



CODE: MT300 - MT200 - MT300SG - MT200SG - **MT400- MT401** - MT500 - MT501



MT400



MT401

## DETTAGLI TECNICI

### STRUTTURA

Schienale con rete portante.  
Sedile in legno multistrato  
sp.11 mm.

### IMBOTTITURA

Schienale con rete portante.  
Sedile in poliuretano flessibile  
con densità 40 kg m<sup>3</sup>.

### BASAMENTO

Telaio 4 gambe in tubo di  
acciaio Ø 20 verniciato o cromo.

### RUOTE / PIEDINO FISSO

Piedini in PP.

### BRACCIOLI

Braccioli fissi in PP nero.

## TECHNICAL DETAILS

### STRUCTURE

Backrest with supporting net.  
Seat in plywood 11 mm thick.

### PADDING

Backrest with supporting net.  
Seat in flexible polyurethane  
with density 40 kg m<sup>3</sup>.

### BASEMENT

4 legs frame in painted or chromed  
steel tube Ø 20.

### WHEELS / FIXED FOOT

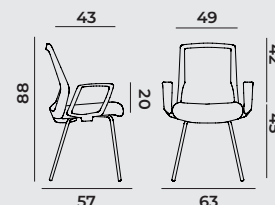
PP feet.

### ARMRESTS

Fixed armrests in black PP.

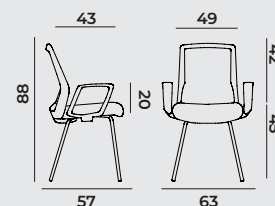
MT400

box m<sup>3</sup>  
0,24



MT401

box m<sup>3</sup>  
0,24



## Rivestimenti /Upholstery

In rete nera e tessuto  
nero.

Black mesh and black  
fabric.

## Base



chrome

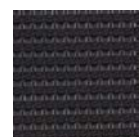
Black paint

## frame

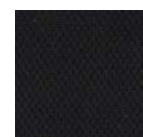


nylon black

## mesh



## fabric



## Optional seat cover color:



M463



M629



M231



M332



Secret 1017  
Eco-leather

# Meeting

POLTRONCINA OPERATIVA / OPERATIVE CHAIR  
SGABELLO / STOOL



CODE: MT300 - MT200 - MT300SG - MT200SG - MT400- MT401 - **MT500** - **MT501**



MT500



MT501

## DETTAGLI TECNICI

### STRUTTURA

Schienale con rete portante.  
Sedile in legno multistrato  
sp.11 mm.

### IMBOTTITURA

Schienale con rete portante.  
Sedile in poliuretano flessibile  
con densità 40 kg m<sup>3</sup>.

### BASAMENTO

Telaio 4 gambe in tubo di  
acciaio Ø 20 verniciato o cro-  
mato.

### RUOTE / PIEDINO FISSO

Piedini in PP.

## TECHNICAL DETAILS

### STRUCTURE

Backrest with supporting net.  
Seat in plywood 11 mm thick.

### PADDING

Backrest with supporting net.  
Seat in flexible polyurethane  
with density 40 kg m<sup>3</sup>.

### BASEMENT

4 legs frame in painted or chro-  
med steel tube Ø 20.

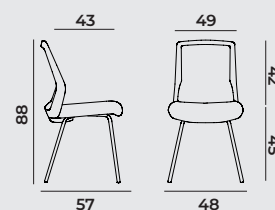
### WHEELS / FIXED FOOT

PP feet.

MT500

box m<sup>3</sup>

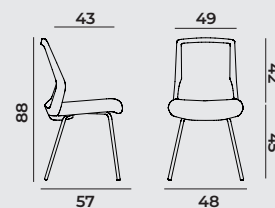
0,24



MT501

box m<sup>3</sup>

0,24



## Rivestimenti / Upholstery

In rete nera e tessuto  
nero.

Black mesh and black  
fabric.

### Base



chrome



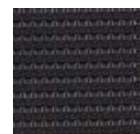
Black paint

### frame

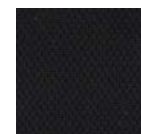


nylon black

### mesh



### fabric



## Optional seat cover color:



M463



M629



M231



M332



Secret 1017  
Eco-leather